



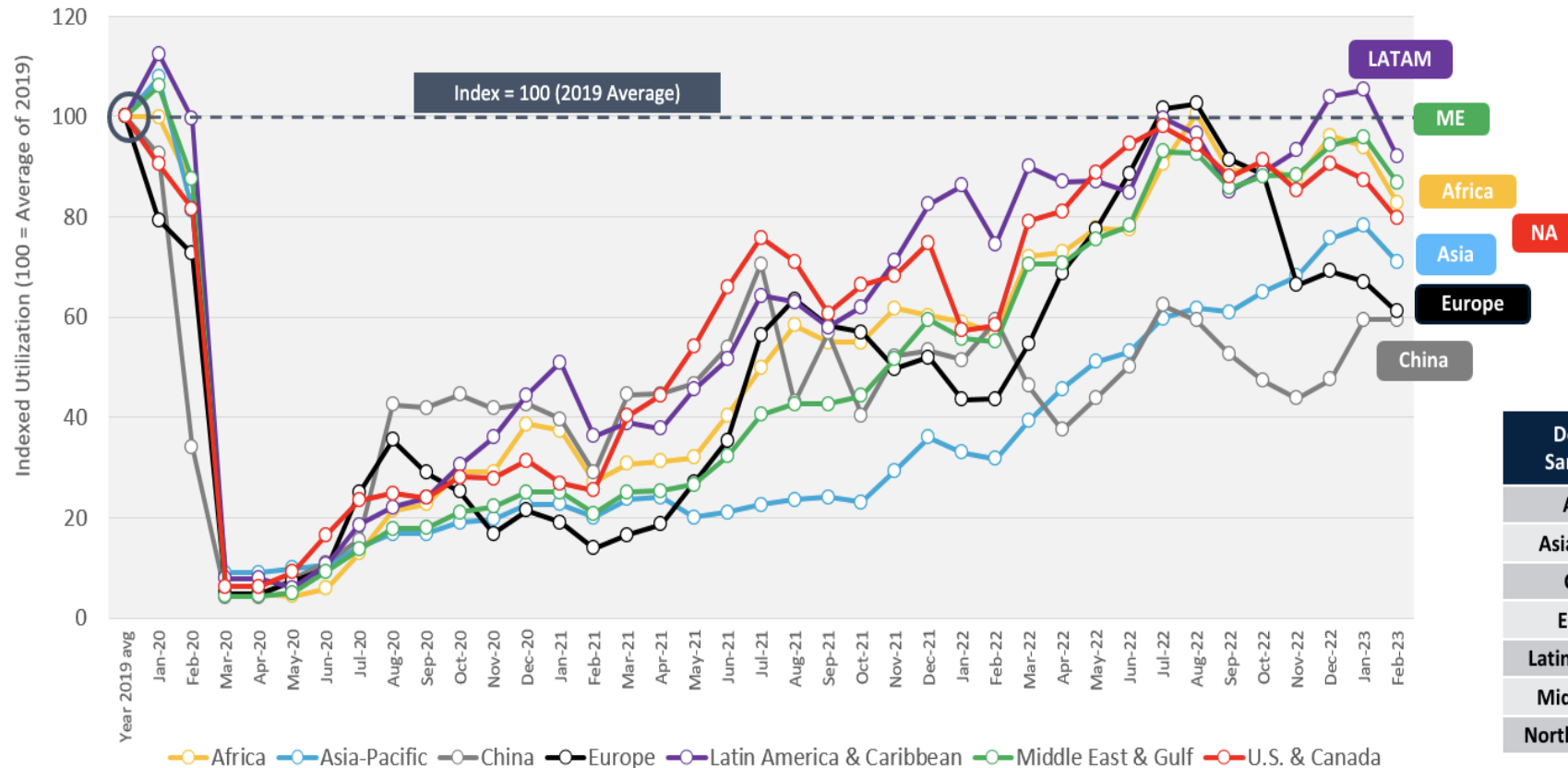
Credit: Rob Finlayson



Share your thoughts **#CAPASummit**

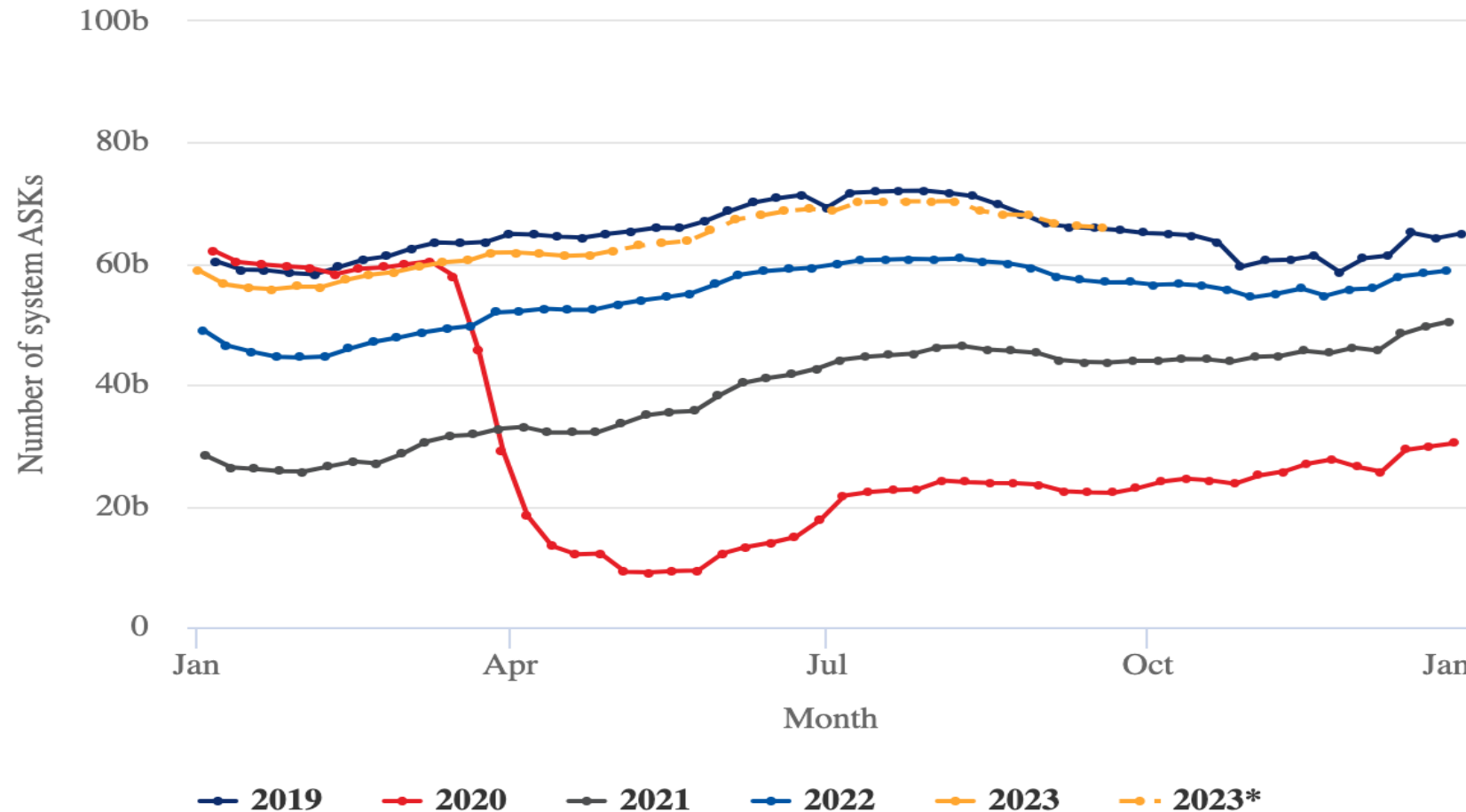
Indexed Revenue Passenger Kilometres (RPK) – By Region

Indexed to 2019 average monthly RPKs



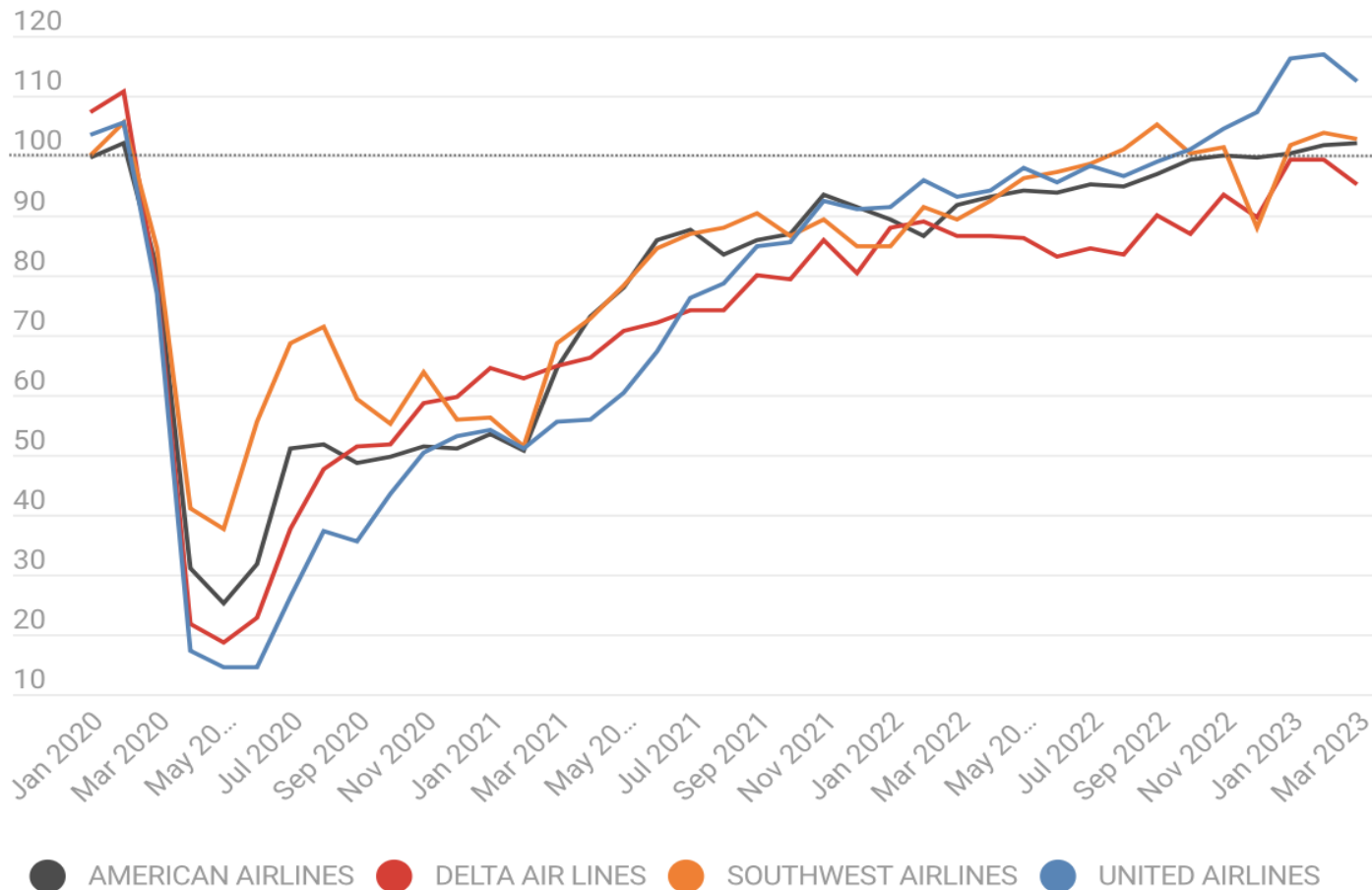
Dec 22/Jan/Feb 23 vs. Same Period of 2018-19	
Africa	-2%
Asia-Pacific	-23%
China	-40%
Europe	-14%
Latin America	-1%
Middle East	-3%
North America	-2%

North American ASKs 2019 Through Mid Sep-2023



Utilization: U.S. 'Big 4' Flights

Flight cycles as a percentage of equivalent month in 2019.



Source: AWIN Tracked Aircraft Utilization. © Informa Markets 2023

AVIATION WEEK
NETWORK

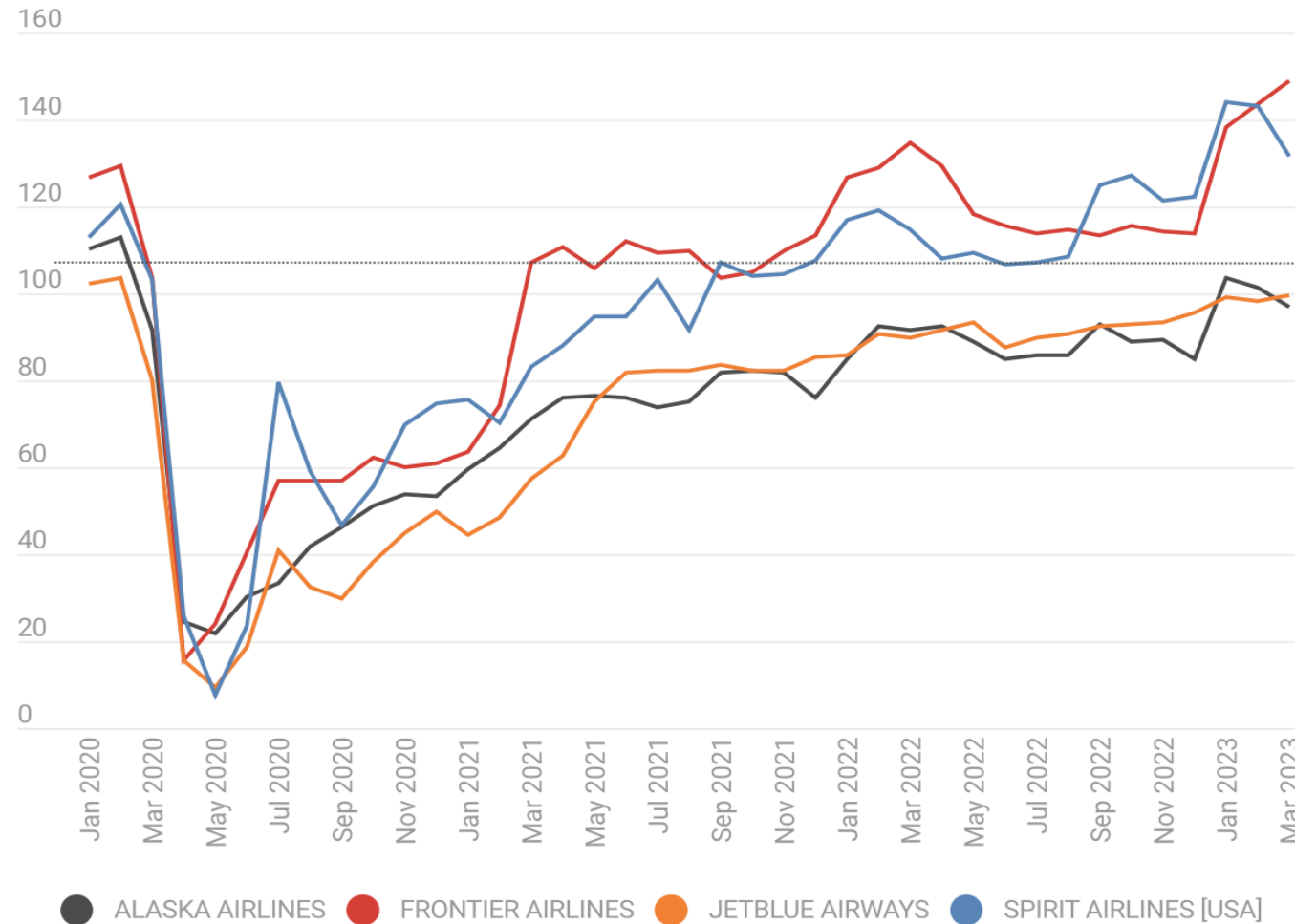


Share your thoughts **#CAPASummit**

AVIATION WEEK
NETWORK

Utilization: U.S. 'Medium 4' Flights

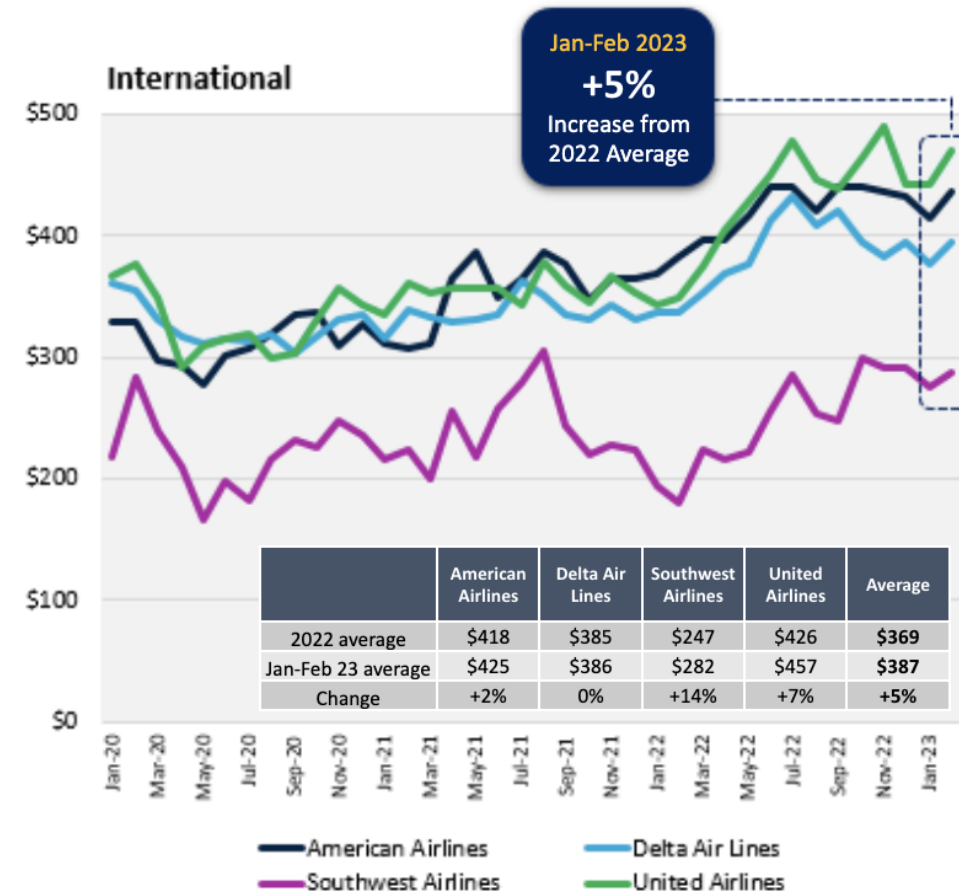
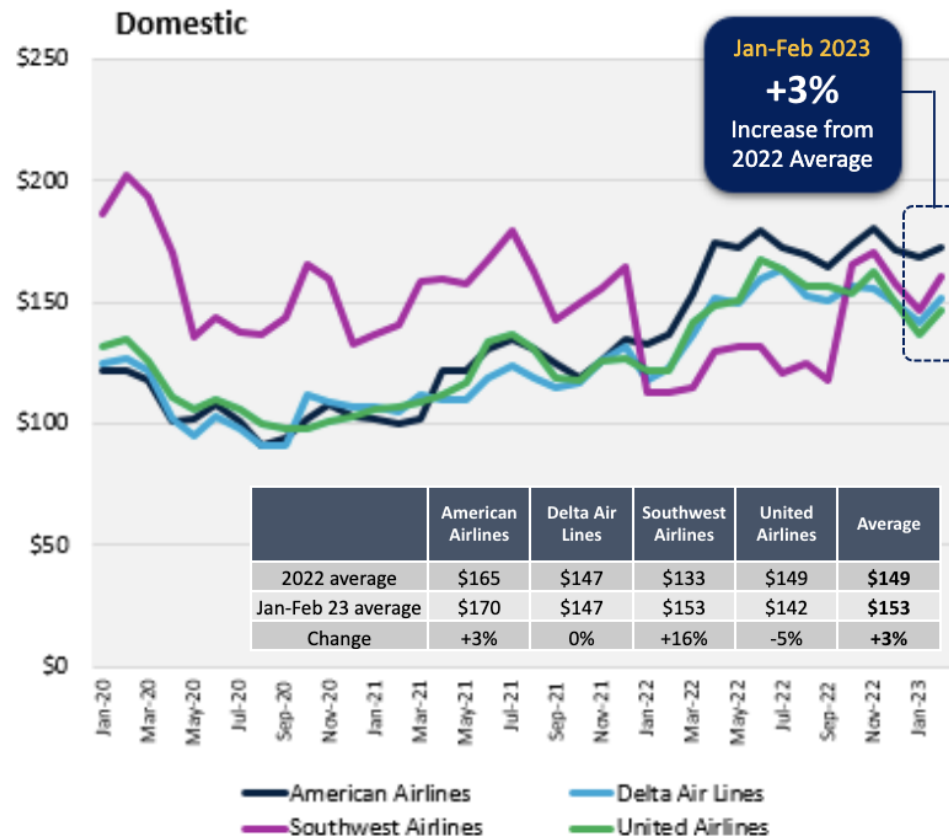
Flight cycles as a percentage of equivalent month in 2019.



Share your thoughts **#CAPASummit**

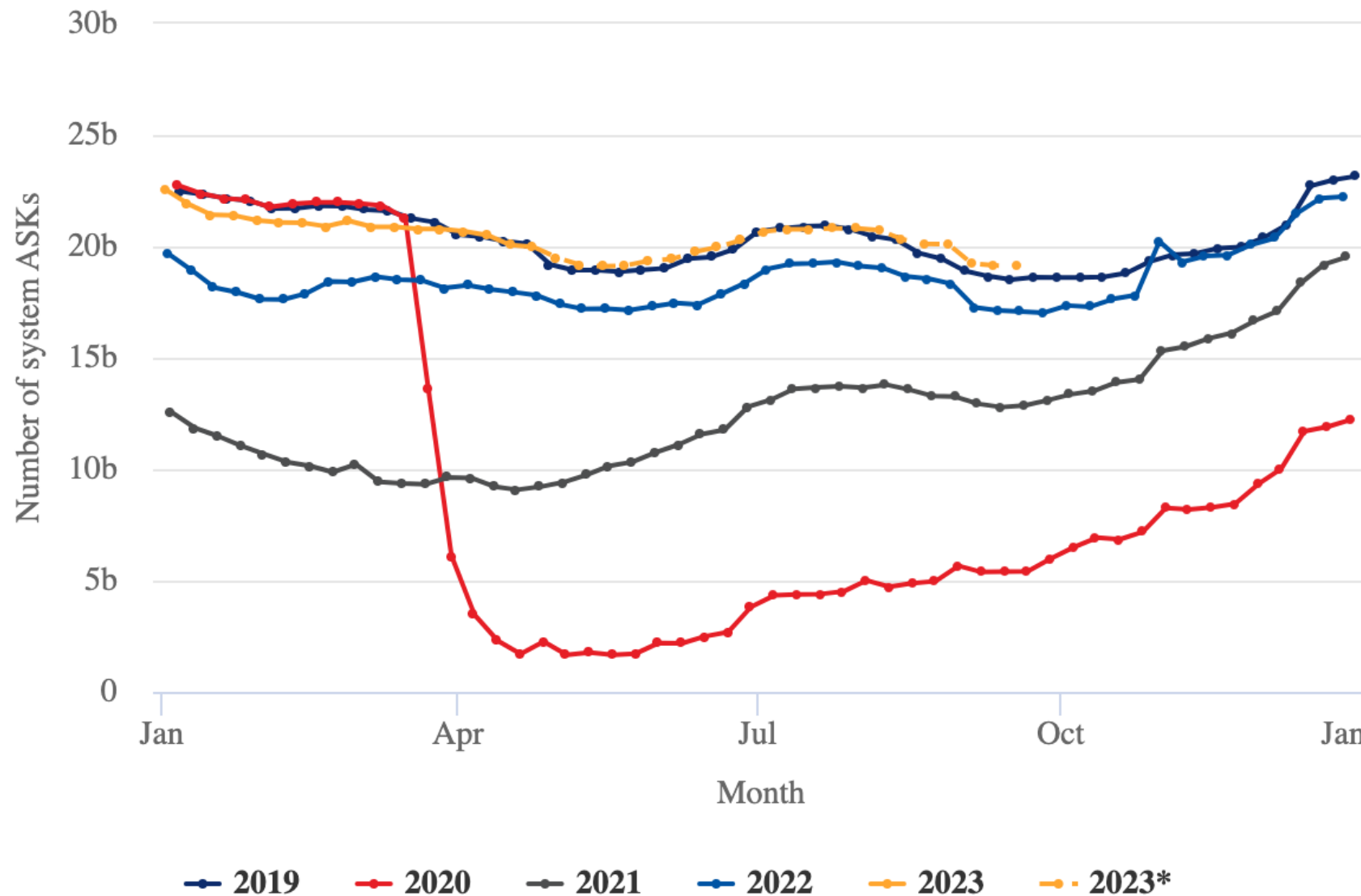
Source: AWIN Tracked Aircraft Utilization. © Informa Markets 2023

U.S. Big 4 Airlines – Average Total Fares



Source: Airport Strategy & Marketing (ASM) Consulting, Aviation Week Network, leg average price comparisons

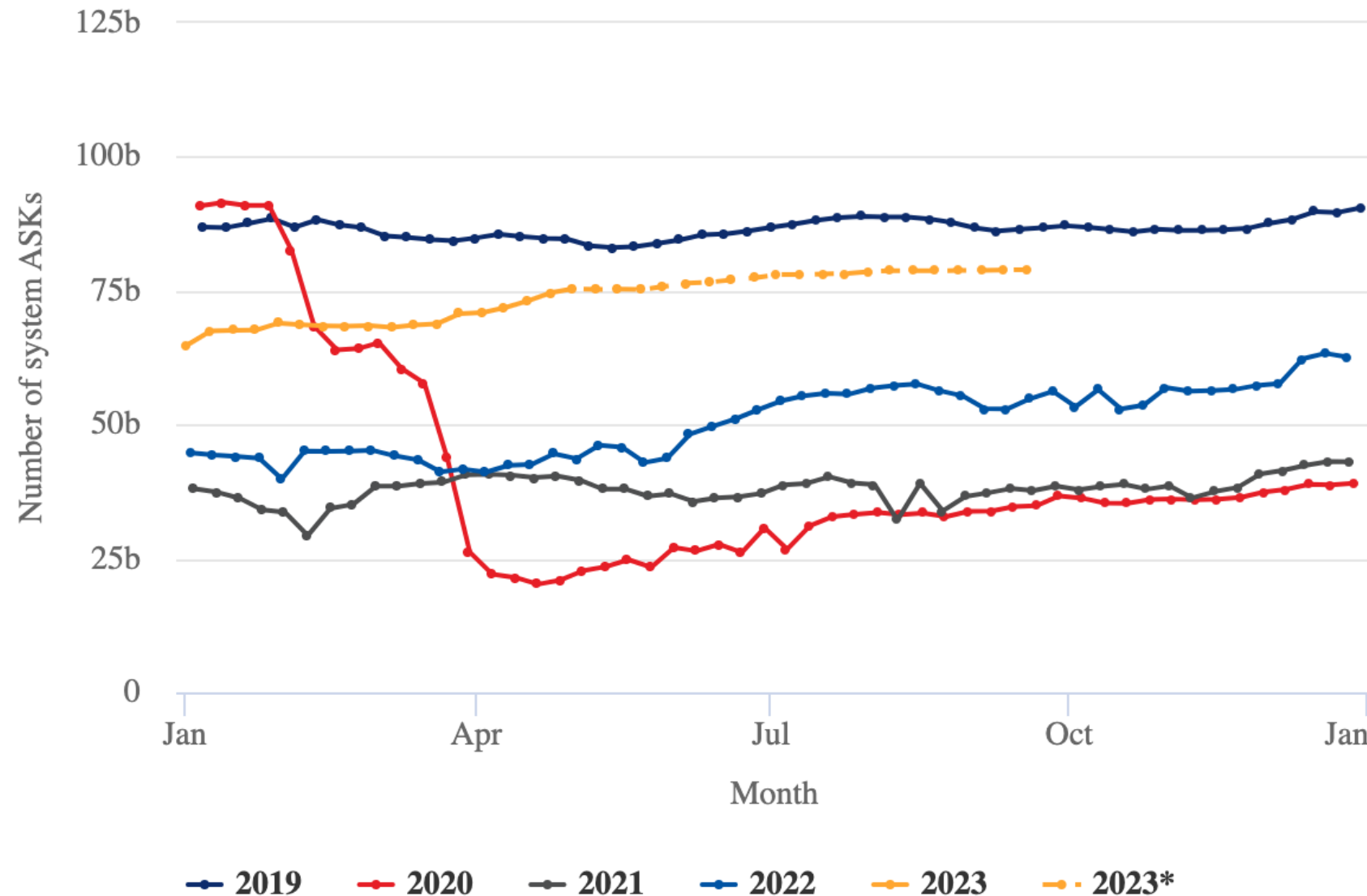
Latin American ASKs 2019 Through Mid Sep-2023

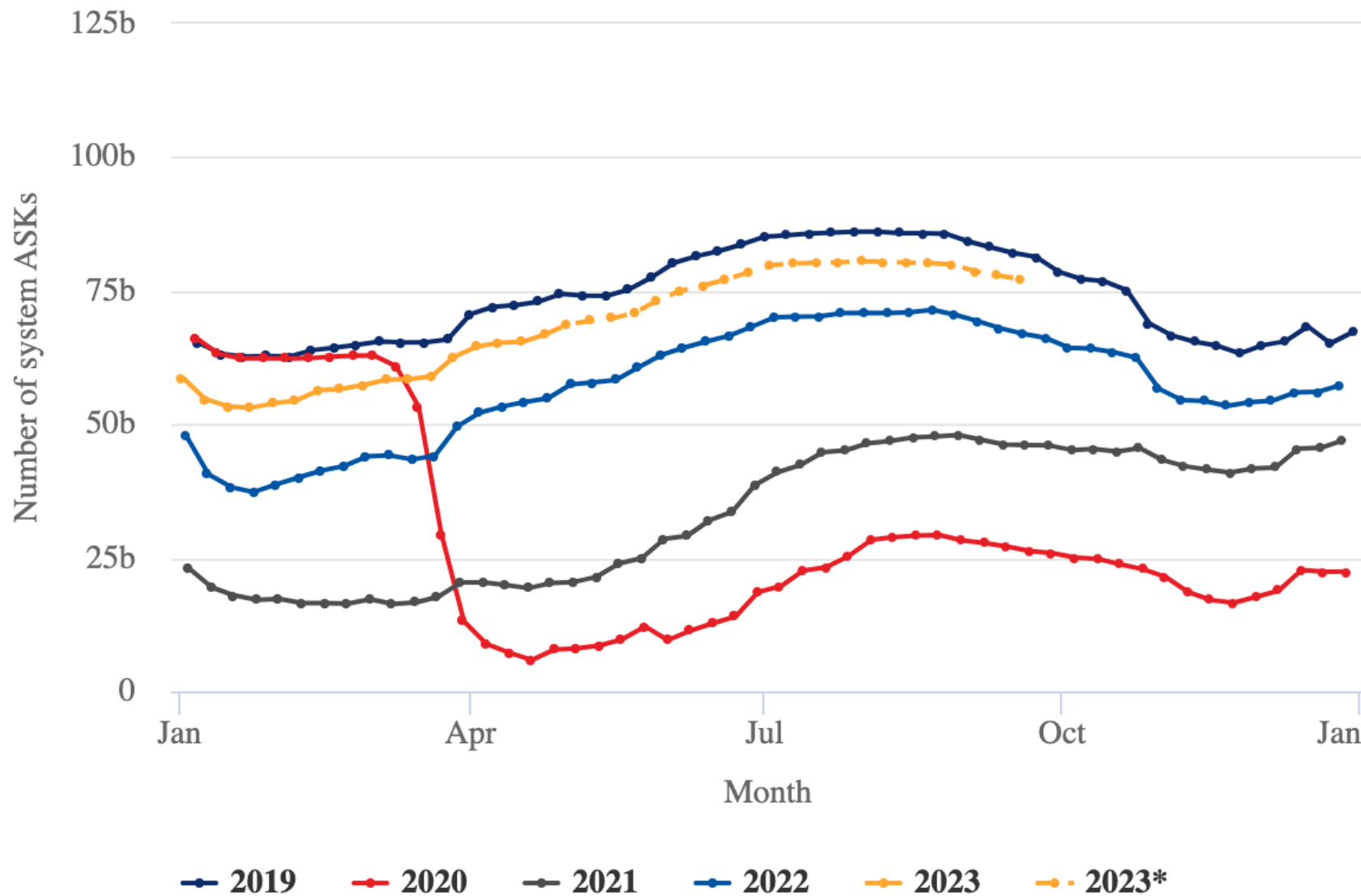


Share your thoughts **#CAPASummit**

Source: CAPA – Centre For Aviation and OAG

Asia ASKs 2019 Through Mid Sep-2023

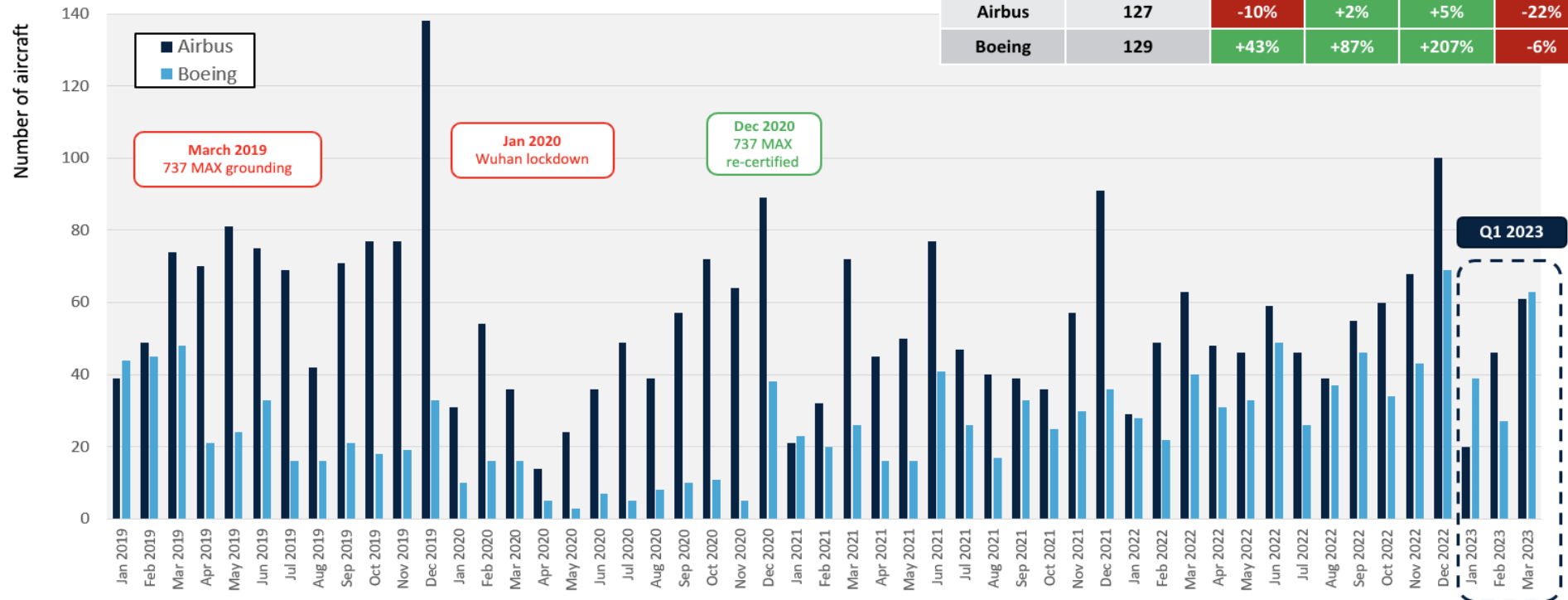




Europe ASKs 2019 Through Mid Sep- 2023

Deliveries – Airbus and Boeing

Monthly deliveries of commercial aircraft



Source: Fleet Discovery, Aviation Week Network, Copyright 2023

4

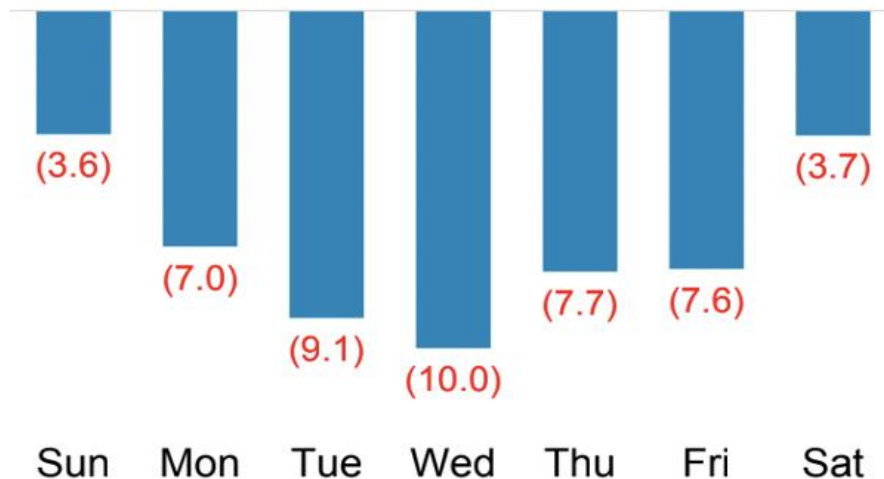


Share your thoughts **#CAPASummit**

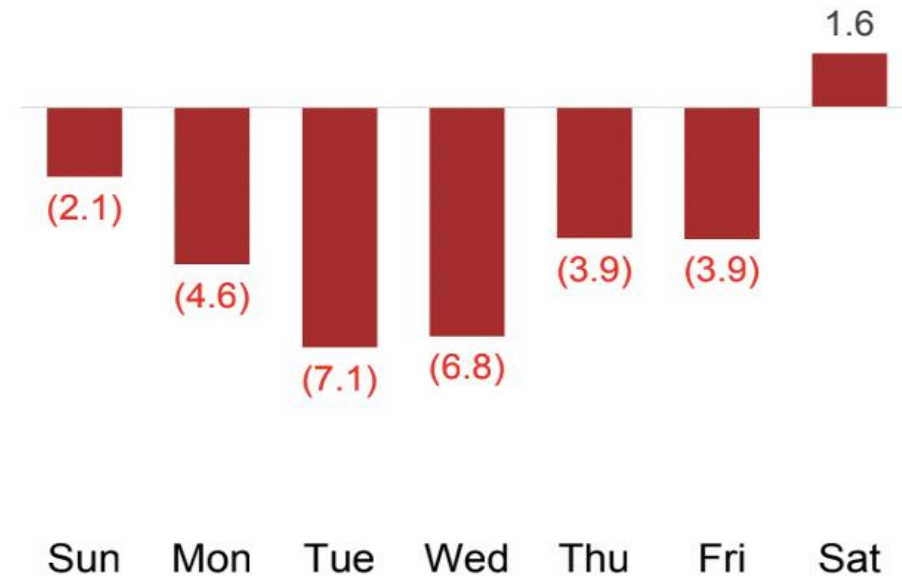
Change in Day-of-Week Travel Patterns Provides Evidence of Increased Leisure Mix for Air

Airlines Have Adapted Their Schedules to Reflect the Changing Mix of Travelers

**Change (%) in TSA Checkpoint
Passenger Volume: 2022 vs. 2017-2019**



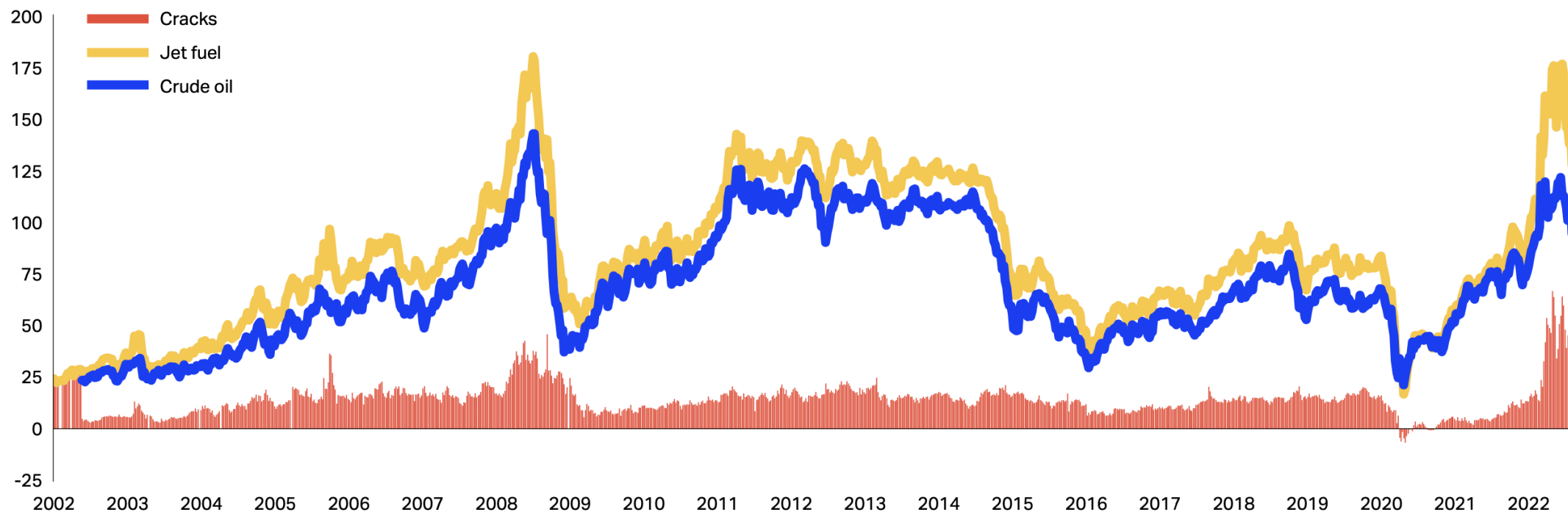
**Change (%) in Scheduled Seats Departing
U.S. Airports: 2022 vs. 2017-2019**



Source: Airlines For America



Share your thoughts **#CAPASummit**



Share your thoughts **#CAPASummit**

Source: IATA Economics using data from Platts